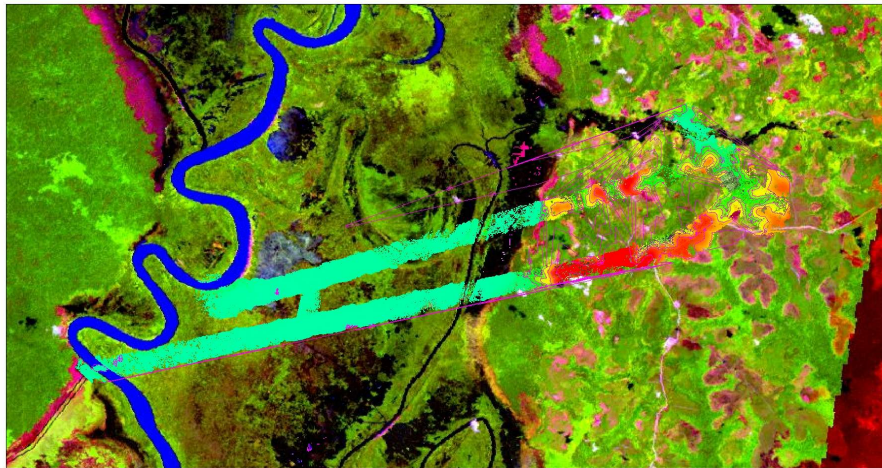


# LiDAR Survey of Barito Basin, 5. Aug. 2007

Barito Basin measured with LiDAR Topography (DTM)  
 5m-contour-lines, Landsat 15.2.2003



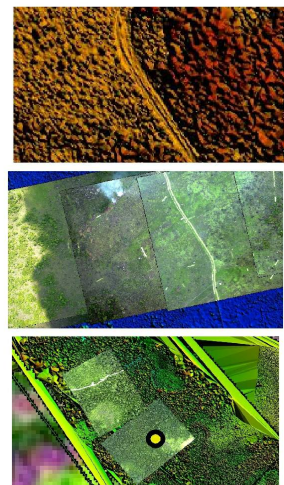
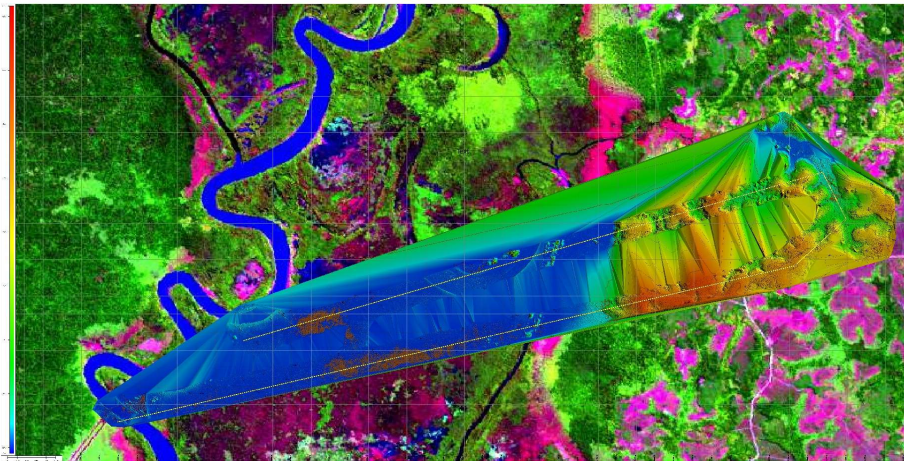
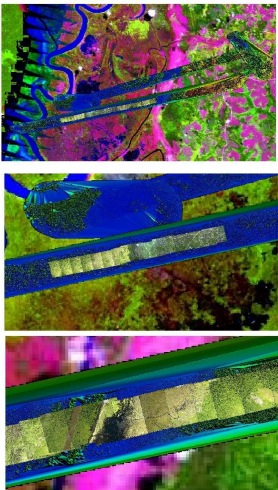
Airborne Laser Scanner



LIDAR-Tracks-DSM with Ortho-Photos

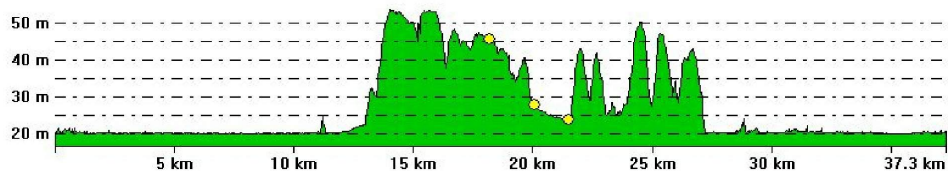
Barito Basin LiDAR DTM-Grid Topography superimposed on Landsat image 16.7.2000  
 with 5m contour-lines and cross-section, profile below

LIDAR-Tracks-DSM with Ortho-Photos



From Pos: 925950.000, -240470.000

To Pos: 929235.000, -238230.000



LIDAR-DTM-LAS-Track 7 + 8 + 9 + 10 + Ortho-Photo

LIDAR-DTM-Grid-Track 7 + 8 + 9 + 10

LIDAR-DSM-Grid-Track 7 + 8 + 9 + 10

